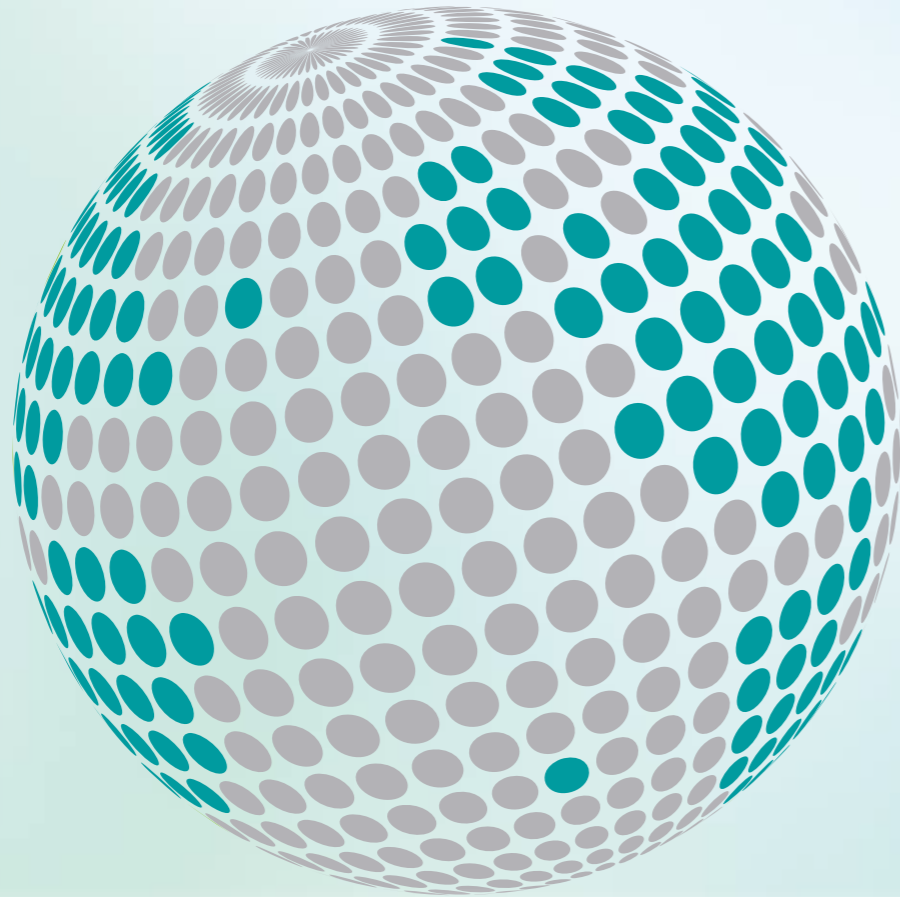




**YOUR GLOBAL PARTNER FOR COMPONENTS,
MODULES AND SYSTEMS IN THE ELEVATOR INDUSTRY**



wittur.com



More information
about Wittur Group
available on-line.

Subject to change without notice! W LINE | W LINE EQ – English - October 2019

safety in motion™

www.wittur.com



Wittur Range of Elevators

MACHINE ROOM-LESS EFFICIENCY



W Line

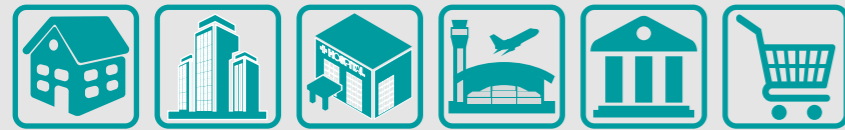
Modular and performant

- Machine room-less central guided high-performance elevator package
- Outstanding ride quality, comfort and noise level
- Highly customisable modular design to meet most demanding requirements

FEATURES

-  320 - 2500 kg
-  1,0 - 3,0 m/s
-  160 m
-  Central guided
-  Wittur SF-MF-LF series
-  Side or centre opening
-  Complete package or mechanical kit only
-  EN 81-20/EN 81-50/EN 81-21
EN 81-28/EN 81-70/EN 81-71

RANGE OF APPLICATION



Easy Installation



Optimised Logistic

Compact or reduced headroom with standard or SLS underslung sling.
Energy-efficient Wittur gearless machine mounted on the rails

The modular MCS1 car is easily assembled from inside the car. Available in an extended range of finishes and panoramic versions

A wide range of Wittur car and landing doors available including Hydra, Pegasus, Core and Augusta in painted, stainless steel and glass finishes

Fully prewired electrical installation including safety circuit, can-bus and car wiring

Car and counterweight equipped with slipper shoes or optional roller guide shoes for increased comfort and performances

Compact or standard pit with optional foldable buffers compliant to EN-81-21







W Line EQ

Best in class shaft efficiency

- Ultra-compact elevator package, designed to maximise the car floor area in relation to the available shaft space
- From conception to logistic, W Line EQ has been designed to offer the quickest and most efficient installation
- Ideal for complete replacement or new installation in a compact shaft

FEATURES

-  180 - 630 kg
-  1,0 m/s
-  30 m
-  Cantilevered
-  E27L
-  Side or centre opening
-  Complete package or mechanical kit only
-  EN 81-20/EN 81-50/EN 81-21
EN 81-28/EN 81-70

RANGE OF APPLICATION



Ultra-compact headroom starting at 2600mm with foldable balustrades and safety equipment compliant to EN81-21

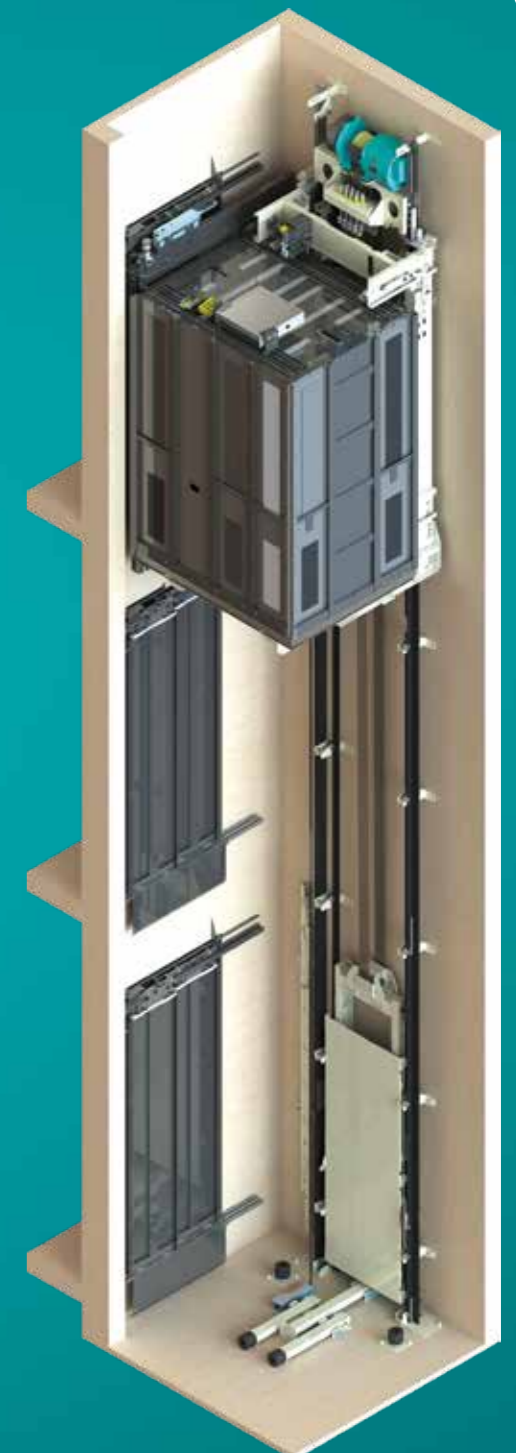
The modular MCS1 car is easily assembled from inside the car. The car size is optimised to achieve maximum shaft efficiency

A wide range of Wittur car and landing doors available including Hydra, Core, Augusta and even Ecobus foldable car door and manual landing doors

Fully prewired electrical installation including safety circuit, can-bus and car wiring

The cantilevered design allows having doors at 90°, 180° and 270° and even all three at once

Ultra-compact pit starting at 340mm with foldable safety props compliant to EN81-21



Cars

Infinite possibilities

- Extreme sense of comfort and security thanks to its robustness
- Outstanding range of finishes including panoramic designs
- An innovative fixing system allows assembling the car from the inside without fastener
- To explore our amazing range, refer to the MCS1 car catalogue



ROMA



MONTE CARLO



BOSTON



AMSTERDAM

Controllers



E-Pack Evo

- Contactor-less for the most silent operations
- Built-in RFI filter
- Fully pre-wired
- Easy menus for seamless setup
- Integrated controller up to 60A
- Up to 64 floors and 8 lifts in a group
- Single or split cabinet for MRL applications
- Built-in UPS
- Compatible with Elgo Limax



E-Pack Plus

- Best in class user interface
- Incredibly easy to setup
- Smooth direct stop with five levels of comfort
- Easy menus for seamless setup
- Integrated controller up to 75A
- Up to 64 floors and 8 lifts in a group
- Single or split cabinet for MRL & MR applications
- Built-in UPS
- Multiple programmable I/O
- Compatible with Elgo Limax

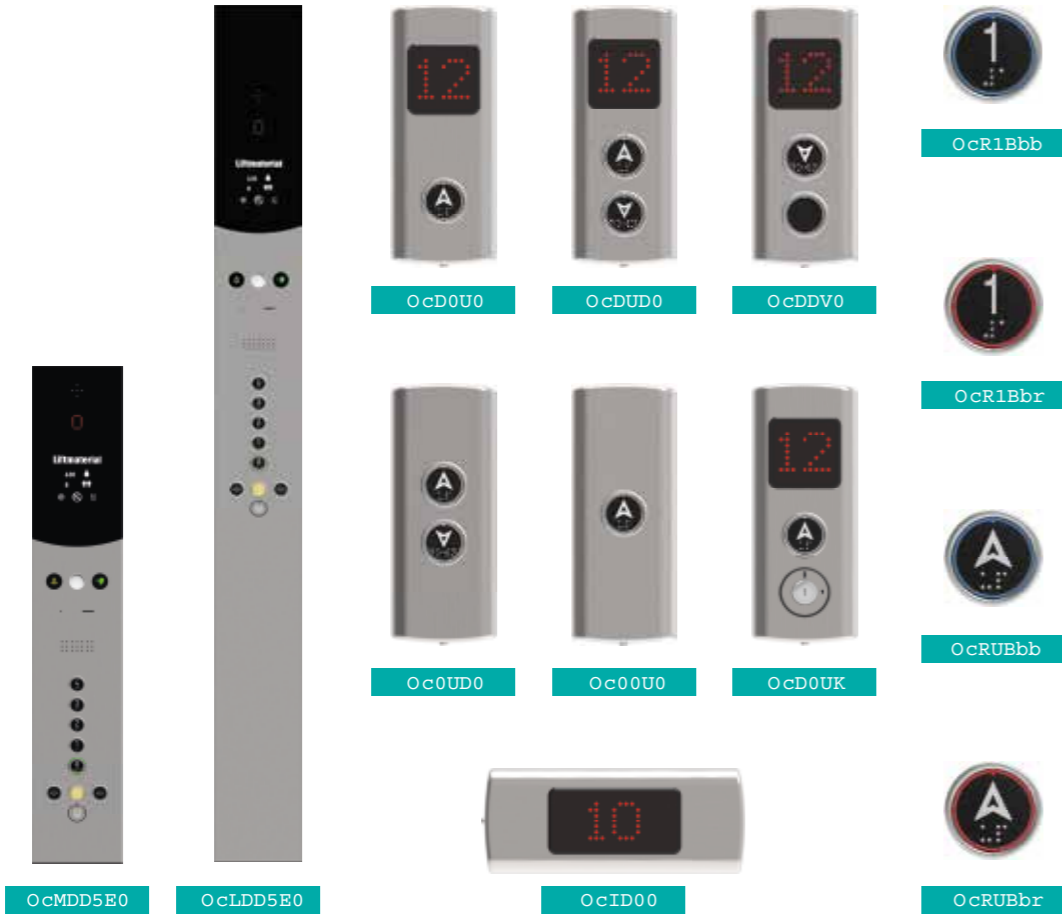


E-Pack Max

- Ideal for special applications
- Vehicle lift, banks, airports special functions
- E-vision remote monitoring
- Destination control
- Up to 64 floors and 8 lifts in a group
- Single or split cabinet for MRL & MR applications
- Can control up to 3 car doors
- Multiple programmable I/O
- Compatible with Elgo Limax

Fixtures

Ocean Series



Specifications



W Line

Rated Load	kg	320	400	450	630	800
Rated Speed	m/s	1,0	1,0	1,0 / 1,6	1,0 / 1,6 / 2,0	1,0 / 1,6 / 2,0 / 2,5
Max. Travel Height	m	30	30	30 / 60	30 / 60 / 90	30 / 60 / 90 / 120
Shaft Width min.	mm	CIW + 530				CIW + 535
Shaft Depth min.	mm	CID + ESD + 82,5 + Door Package				
Standard Pit min.	mm	950	950	950 / 1050	950 / 1050 / 1200	950 / 1050 / 1200 / 1550
Standard Headroom min. *	mm	3420	3420	3420 / 3590	3420 / 3590 / 3870	3420 / 3590 / 3870 / 4540
Reduced Pit min. **	mm	500 / 900				
Reduced Headroom min. **	mm	CIH + 750 (500****) / CIH + 900				
Car Internal Width (CIW) ***	mm	900	1100	1000	1100	1350

Rated Load	kg	1000	1275	1600	2000	2500
Rated Speed	m/s	1,0 / 1,6 / 2,0 / 2,5 / 3,0	1,0 / 1,6 / 2,0 / 2,5 / 3,0	1,0 / 1,6 / 2,0 / 2,5 / 3,0	1,0 / 1,6 / 2,0 / 2,5	1,0 / 1,6 / 2,0
Max. Travel Height	m	30 / 60 / 90 / 120 / 160	30 / 60 / 90 / 120 / 160	30 / 60 / 90 / 120 / 160	30 / 60 / 90 / 120	30 / 60 / 90
Shaft Width min.	mm	CIW + 535	CIW + 700			
Shaft Depth min.	mm	CID + ESD + 82,5 + Door Package				
Standard Pit min.	mm	950 / 1050 / 1200 / 1550 / 1820	1200 / 1300 / 1400 / 1550 / 1820	1200 / 1300 / 1400 / 1550 / 1820	1200 / 1300 / 1400 / 1550	1200 / 1300 / 1400
Standard Headroom min. *	mm	3420 / 3590 / 3870 / 4540 / 4810	3900 / 4050 / 4200 / 4640 / 4810	3970 / 4130 / 4200 / 4640 / 4810	4000 / 4160 / 4310 / 4640	4000 / 4160 / 4310
Reduced Pit min. **	mm	500 / 900	950 / 1050			
Reduced Headroom min. **	mm	CIH + 750 (500****) / CIH + 900	CIH + 1450 / CIH + 1600		CIH + 1600 / CIH + 1750	
Car Internal Width (CIW) ***	mm	1100	1200	1400	1500	1800

* Valid dimensions for; CIH:2150 mm up to 1000 kg, CIH:2250mm from 1275 kg to 2500 kg. Safety balustrade with 700 mm height.
 ** Reduced pit and headroom are available for 1 m/s and 1,6 m/s, compensation chain included for 1,6 m/s. Foldable balustrade could be used for reduced headroom.
 *** Mentioned CIW and CID values are reference dimensions acc. to rated load. Different dimensions are also available.
 **** The value is valid with absolut shaft information system.

Wave Series



W Line EQ

Rated Load	kg	180	225	320	375 ⁽¹⁾	375 ⁽¹⁾	450	525	630	
Suspension		1:1			2:1					
Rated Speed	m/s	1,0								
Max. Travel Height	m	30								
Max. Stop Number		10								
Entrance Type		90° / 180° / 270° / 3 Way Entrances								
Shaft Width	mm	CIW + 370 ⁽²⁾ / CIW + 460 ⁽³⁾ / CIW + 125 ⁽⁴⁾			CIW + 370 ⁽²⁾ / CIW + 495 ⁽³⁾ / CIW + 125 ⁽⁴⁾					
Shaft Depth	mm	CID + ESD + 62,5 + Door Package ⁽²⁾⁽³⁾ / CID + ESD + 310 & 400 & 435 + Door Package ⁽⁴⁾								
Standard Pit min.	mm	1020 [920] ⁽⁶⁾								
Standard Headroom min.	mm	3385 min. / CIH + 1285								
Reduced Pit min.	mm	340			370					
Reduced Headroom Min	mm	2600 & 2900 / CIH + 600 & CIH + 900 ⁽⁶⁾			2600 / CIH + 600					
Door Width	mm	600 - 1000								
Door Height	mm	2000 - 2100								
Door type		Hydra / Augusta Evo / Eco Bus / Finline / Core								
Car Internal Width and Depth (CIW) / (CID)	mm	700 - 850	700 - 1100	700 - 1400	700 - 1550	800 - 1450	800 - 1600	800 - 1800	800 - 2000	
Car Internal Height (CIH)	mm	2000 - 2300								

(1) According to P weight, system's suspension should be considered
 (2) Car sling on side and standard headroom (Shaft wall to car wall: 310 mm)
 (3) Car sling on side and reduce headroom (Shaft wall to car wall: 400 mm for 1:1 & 435 mm for 2:1)
 (4) Car sling on rear for all headroom and all suspension
 (5) Permanently refuge space with telescopic apron
 (6) According to DBG dimension

* To view the full range of available options, refer to our main product brochures